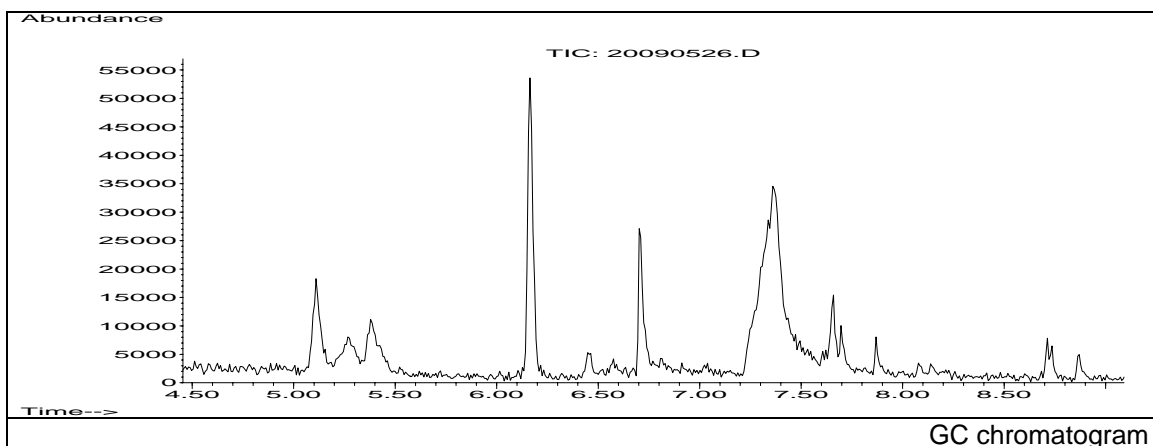


# JRC CRL - FCM Database / GC-MS

Sample Name: 1,3-Butanediol  
Solvent: Ethanol  
Concentration: 100 µg/mL

Date: 20/09/2005  
CAS: 000107-88-0  
PM ref: 13690 [U.R.N. M087]



m/z	Abundance	Ion Intensity %	m/z	Abundance	Ion Intensity %
38.10	3799,0	3,20	46.10	5443,0	4,58
39.10	16209,0	13,64	47.00	2906,0	2,45
40.10	3670,0	3,09	55.10	7620,0	6,41
41.10	16808,0	14,14	57.10	31424,0	26,44
42.10	21616,0	18,19	71.10	3828,0	3,22
43.10	118848,0	100,00	72.10	30336,0	25,53
44.10	24000,0	20,19	75.10	10492,0	8,83
45.10	88528,0	74,49			

Spectrometer: HEWLETT PACKARD GC/MS 6890/5973  
Inlet system: capillary GC/MS  
Scan Range: 40-700 amu  
Source temperature: 230 °C

Flow: 1.2 mL/min  
Column: DB 17-HT (30 m x 0.25 mm x 0.15 µm)  
Programme temperature: 40 °C (3 min); 20 °C/min  
(350 °C); 350 °C (20 min)