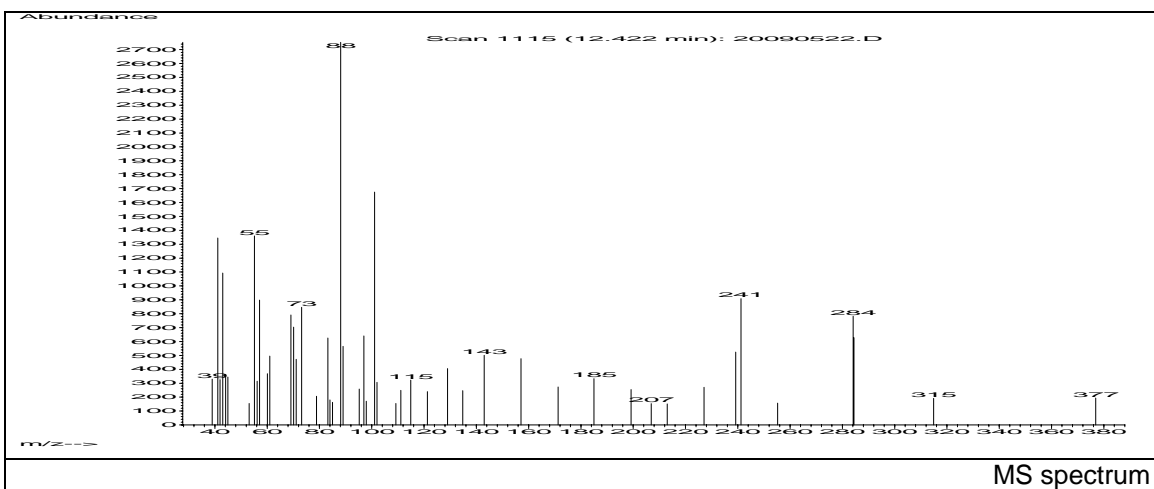
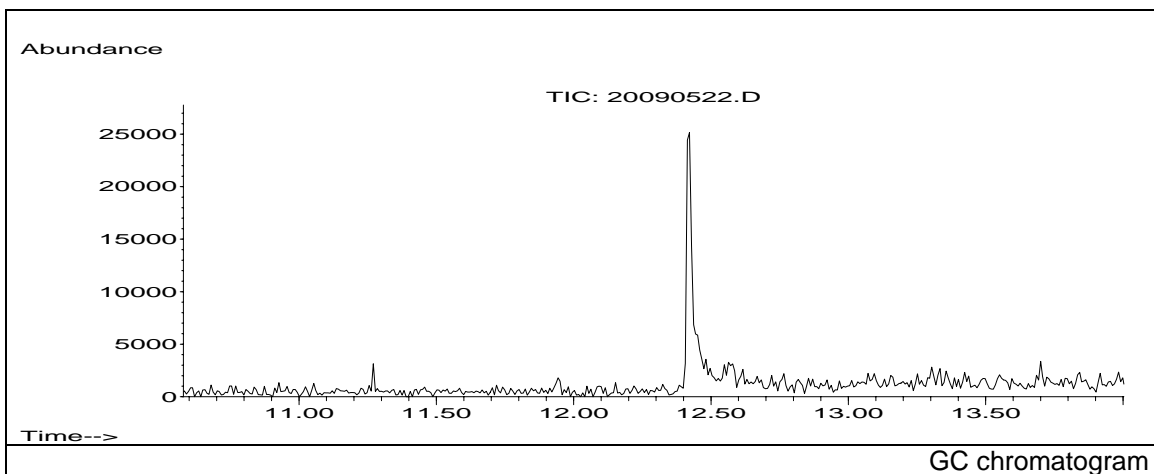


# JRC CRL - FCM Database / GC-MS

Sample Name: Palmitic acid  
Solvent: Ethanol  
Concentration: 100 µg/mL

Date: 21/09/2005  
CAS: 000057-10-3  
PM ref: 22780 [U.R.N. M083]



m/z	Abundance	Ion Intensity %	m/z	Abundance	Ion Intensity %
41.10	1344,0	48,84	88.10	2752,0	100,00
43.00	1093,0	39,72	89.00	565,0	20,53
55.10	1360,0	49,42	97.00	640,0	23,26
57.10	898,0	32,63	101.10	1675,0	60,86
69.10	791,0	28,74	241.20	908,0	32,99
70.10	704,0	25,58	284.10	782,0	28,42
73.20	846,0	30,74	284.40	627,0	22,78
83.20	625,0	22,71			

Spectrometer: HEWLETT PACKARD GC/MS 6890/5973  
Inlet system: capillary GC/MS  
Scan Range: 40-700 amu  
Source temperature: 230 °C

Flow: 1.2 mL/min  
Column: DB 17-HT (30 m x 0.25 mm x 0.15 µm)  
Programme temperature: 40 °C (3 min); 20 °C/min  
(350 °C); 350 °C (20 min)