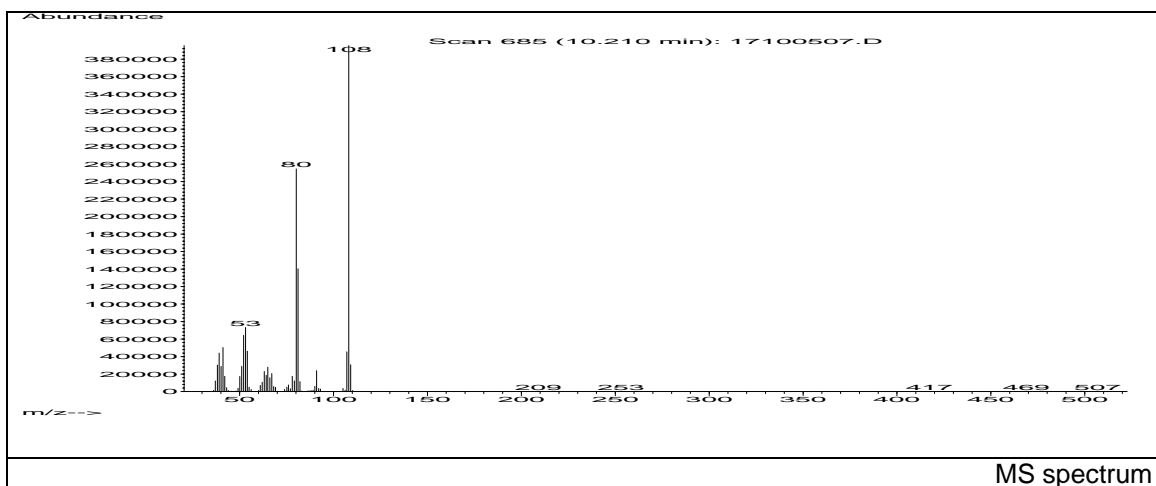
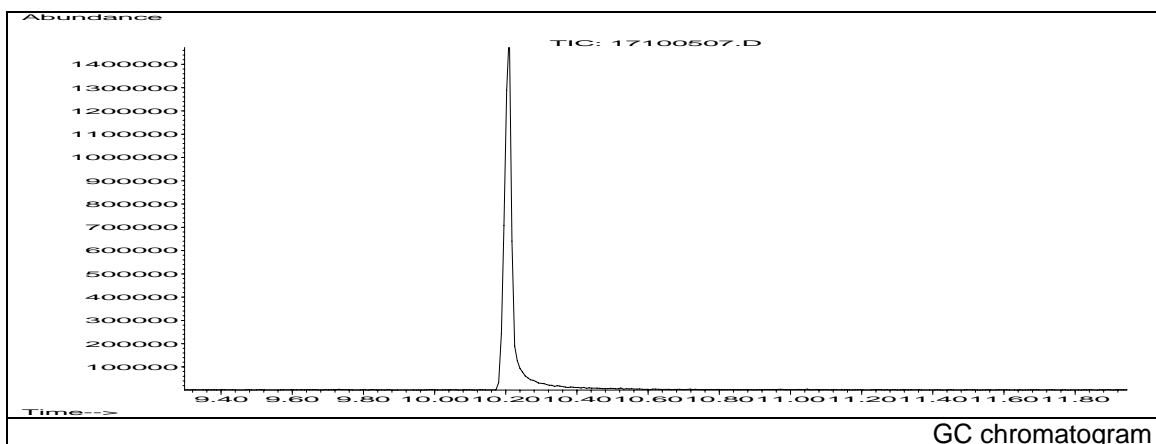


JRC CRL - FCM Database / GC-MS

Sample Name: 1,3-Phenylenediamine
Solvent: Ethanol
Concentration: 100 µg/mL

Date: 17/01/2005
CAS: 000108-45-2
PM ref: 23050 [U.R.N. M053]



| m/z | Abundance | Ion Intensity % | m/z | Abundance | Ion Intensity % |
|-------|-----------|-----------------|--------|-----------|-----------------|
| 38.10 | 30272,0 | 7,66 | 65.00 | 27776,0 | 7,02 |
| 39.10 | 43976,0 | 11,12 | 80.10 | 254400,0 | 64,34 |
| 40.10 | 28824,0 | 7,29 | 81.10 | 140416,0 | 35,51 |
| 41.10 | 50272,0 | 12,71 | 91.00 | 23896,0 | 6,04 |
| 51.10 | 28768,0 | 7,28 | 107.10 | 45480,0 | 11,50 |
| 52.10 | 64248,0 | 16,25 | 108.10 | 395392,0 | 100,00 |
| 53.10 | 73192,0 | 18,51 | 109.10 | 30496,0 | 7,71 |
| 54.10 | 46152,0 | 11,67 | | | |

Spectrometer: HEWLETT PACKARD GC/MS 6890/5973
Inlet system: capillary GC/MS
Scan Range: 40-700 amu
Source temperature: 230 °C

Flow: 1.2 mL/min
Column: DB 17-HT (30 m x 0.25 mm x 0.15 µm)
Programme temperature: 40 °C (3 min); 20 °C/min
(350 °C); 350 °C (20 min)