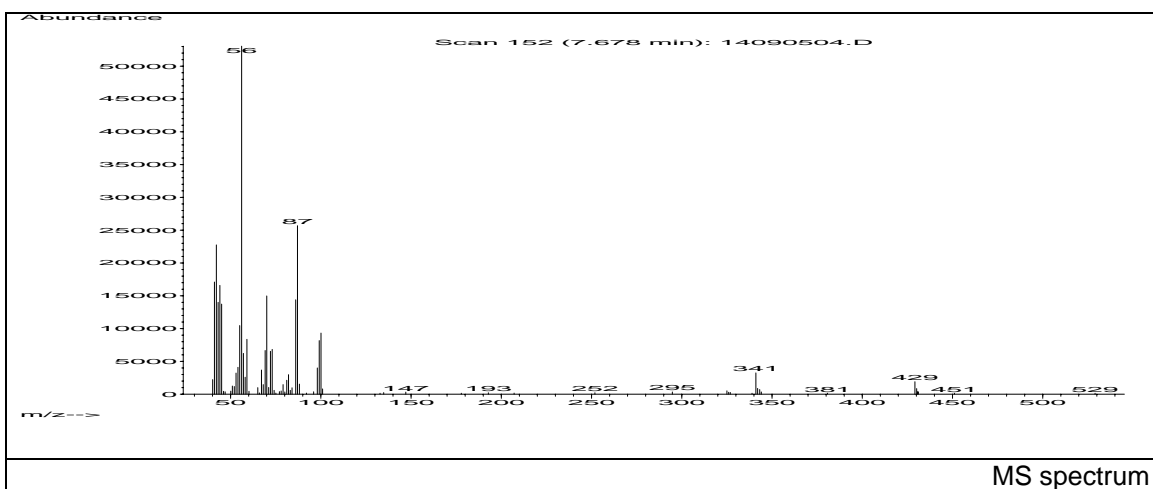
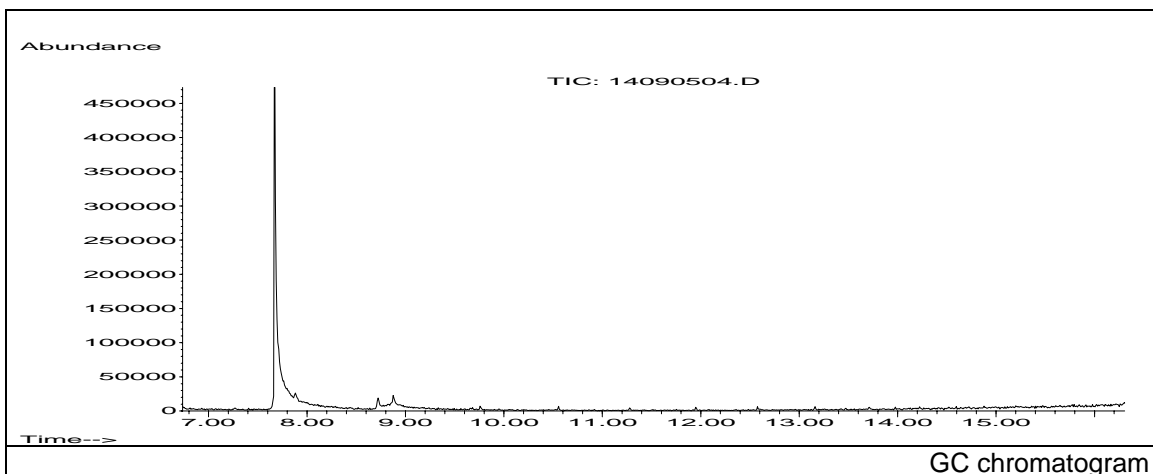


JRC CRL - FCM Database / GC-MS

Sample Name: Hexamethylene diamine
Solvent: Ethanol
Concentration: 100 µg/mL

Date: 14/09/2005
CAS: 000124-09-4
PM ref: 18460 [U.R.N. M015]



m/z	Abundance	Ion Intensity %	m/z	Abundance	Ion Intensity %
41.10	11568,0	33,21	69.10	4977,0	14,29
42.10	14726,0	42,28	70.10	9684,0	27,80
43.10	9129,0	26,21	72.10	4434,0	12,73
44.10	8844,0	25,39	86.10	8654,0	24,84
45.10	8282,0	23,78	87.10	16023,0	46,00
55.20	5824,0	16,72	99.20	4999,0	14,35
56.10	34832,0	100,00	100.10	6527,0	18,74
59.10	7282,0	20,91			

Spectrometer: HEWLETT PACKARD GC/MS 6890/5973
Inlet system: capillary GC/MS
Scan Range: 40-700 amu
Source temperature: 230 °C

Flow: 1.2 mL/min
Column: DB 17-HT (30 m x 0.25 mm x 0.15 µm)
Programme temperature: 40 °C (3 min); 20 °C/min
(350 °C); 350 °C (20 min)