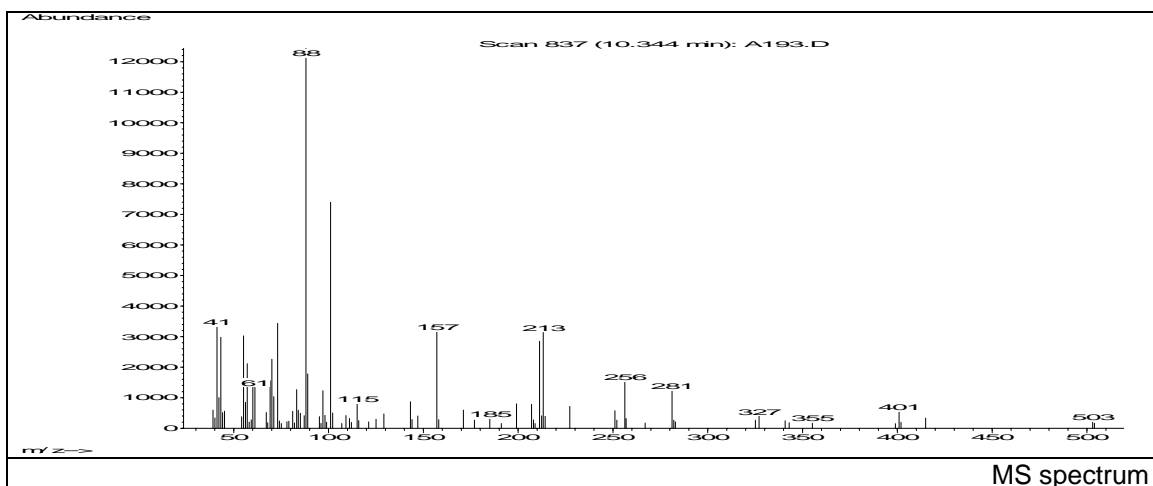
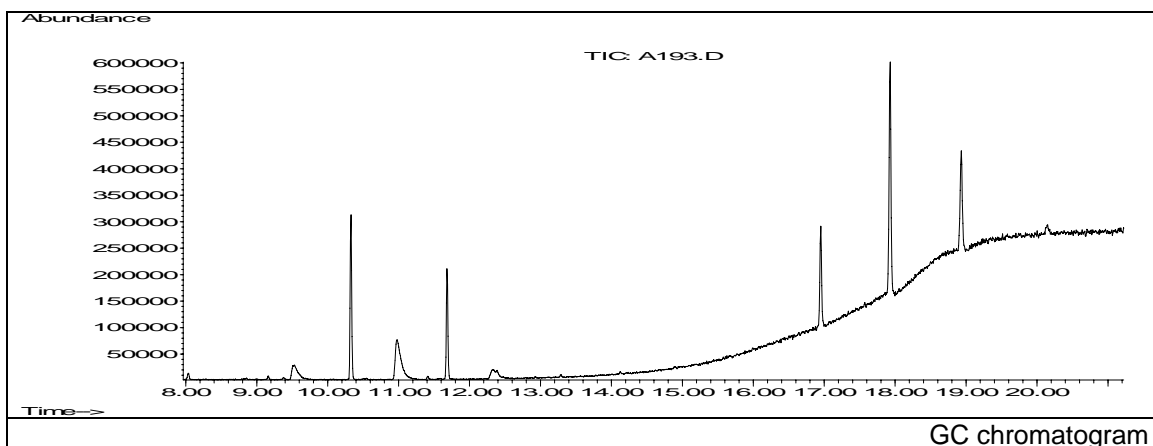


JRC CRL - FCM Database / GC-MS

Sample Name: Mixed linear aliphatic saturated fatty acid ester
Solvent: Ethanol
Concentration: 100 µg/mL

Date: 31/01/2007
CAS: -
PM ref: - [U.R.N. A193]

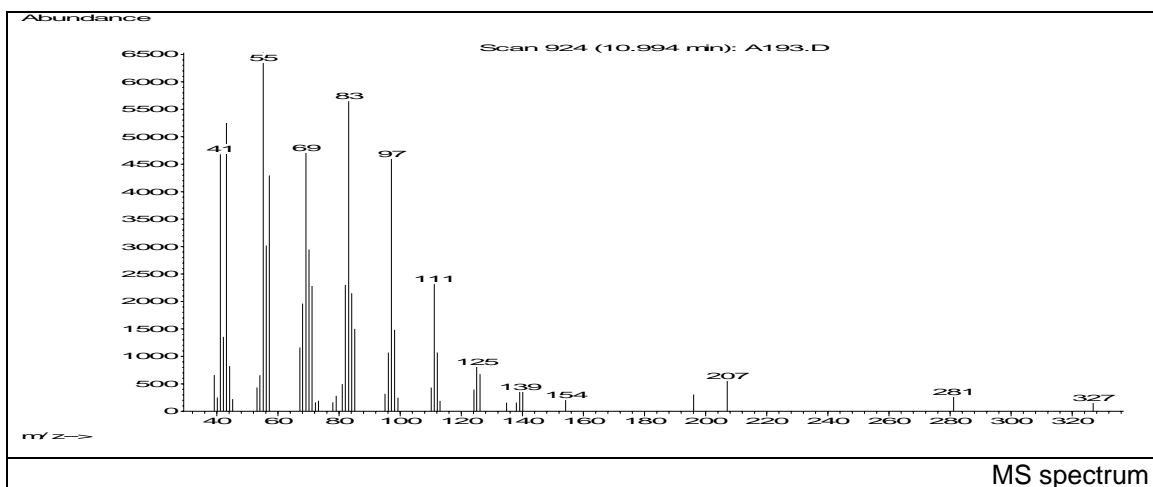


m/z	Abundance	Ion Intensity %	m/z	Abundance	Ion Intensity %
41.15	3325.0	26.75	73.15	3432.0	27.61
43.15	2981.0	23.98	88.05	12431.0	100.00
55.15	3028.0	24.36	89.05	1778.0	14.30
57.15	2114.0	17.01	101.05	7398.0	59.51
60.05	1359.0	10.93	157.15	3158.0	25.40
61.15	1344.0	10.81	211.25	2849.0	22.92
69.15	1554.0	12.50	213.25	3137.0	25.24
70.15	2263.0	18.20	256.25	1513.0	12.17

Spectrometer: HEWLETT PACKARD GC/MS 6890/5973
Inlet system: capillary GC/MS
Scan Range: 40-700 amu
Source temperature: 230°C

Flow: 1.2 mL/min
Column: HP-5MS (30 m x 0.25 mm x 0.25 µm)
Programme temperature: 60°C; 15°C/min (300°C)
10°C/min (325°C); 6.5 min

JRC CRL - FCM Database / GC-MS

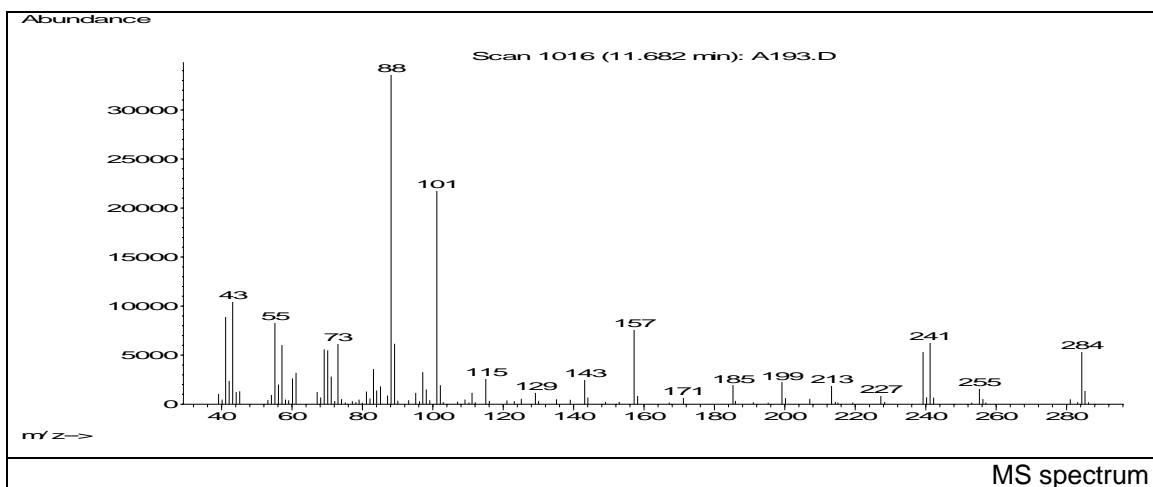


m/z	Abundance	Ion Intensity %	m/z	Abundance	Ion Intensity %
41.15	4682.0	71.67	71.15	2283.0	34.95
43.15	5251.0	80.38	82.05	2302.0	35.24
55.15	6533.0	100.00	83.15	5647.0	86.44
56.15	3021.0	46.24	84.15	2152.0	32.94
57.15	4295.0	65.74	85.15	1500.0	22.96
68.05	1963.0	30.05	97.15	4596.0	70.35
69.15	4709.0	72.08	98.15	1483.0	22.70
70.15	2948.0	45.12	111.15	2318.0	35.48

Spectrometer: HEWLETT PACKARD GC/MS 6890/5973
 Inlet system: capillary GC/MS
 Scan Range: 40-700 amu
 Source temperature: 230°C

Flow: 1.2 mL/min
 Column: HP-5MS (30 m x 0.25 mm x 0.25 µm)
 Programme temperature: 60°C; 15°C/min (300°C)
 10°C/min (325°C); 6.5 min

JRC CRL - FCM Database / GC-MS

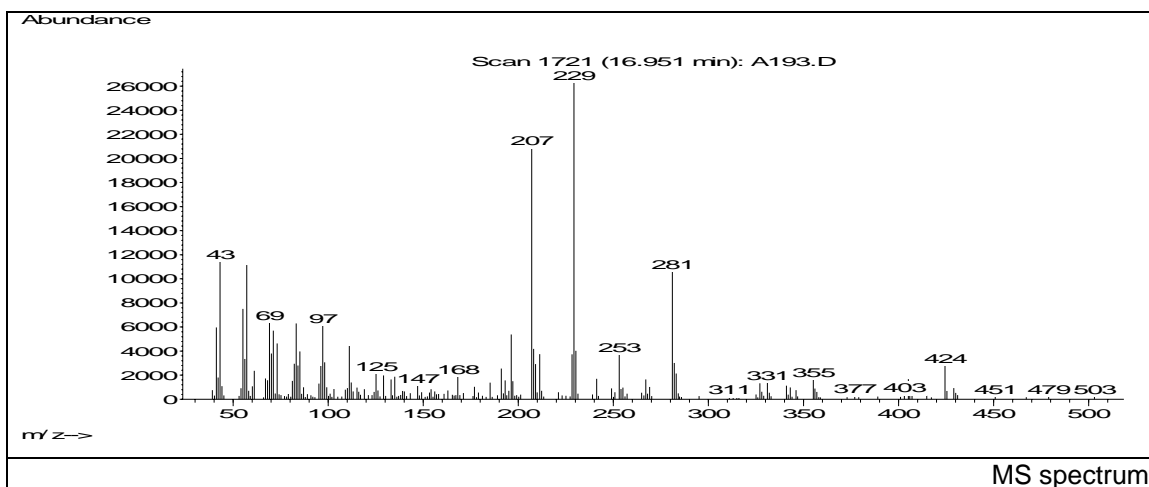


m/z	Abundance	Ion Intensity %	m/z	Abundance	Ion Intensity %
41.15	8881.0	25.46	88.15	34880.0	100.00
43.15	10498.0	30.10	89.15	6167.0	17.68
55.15	8304.0	23.81	97.15	3281.0	9.41
57.15	6037.0	17.31	101.15	21800.0	62.50
69.15	5596.0	16.04	157.15	7619.0	21.84
70.15	5502.0	15.77	239.25	5319.0	15.25
73.05	6180.0	17.72	241.25	6288.0	18.03
83.15	3580.0	10.26	284.35	5414.0	15.52

Spectrometer: HEWLETT PACKARD GC/MS 6890/5973
 Inlet system: capillary GC/MS
 Scan Range: 40-700 amu
 Source temperature: 230°C

Flow: 1.2 mL/min
 Column: HP-5MS (30 m x 0.25 mm x 0.25 µm)
 Programme temperature: 60°C; 15°C/min (300°C)
 10°C/min (325°C); 6.5 min

JRC CRL - FCM Database / GC-MS

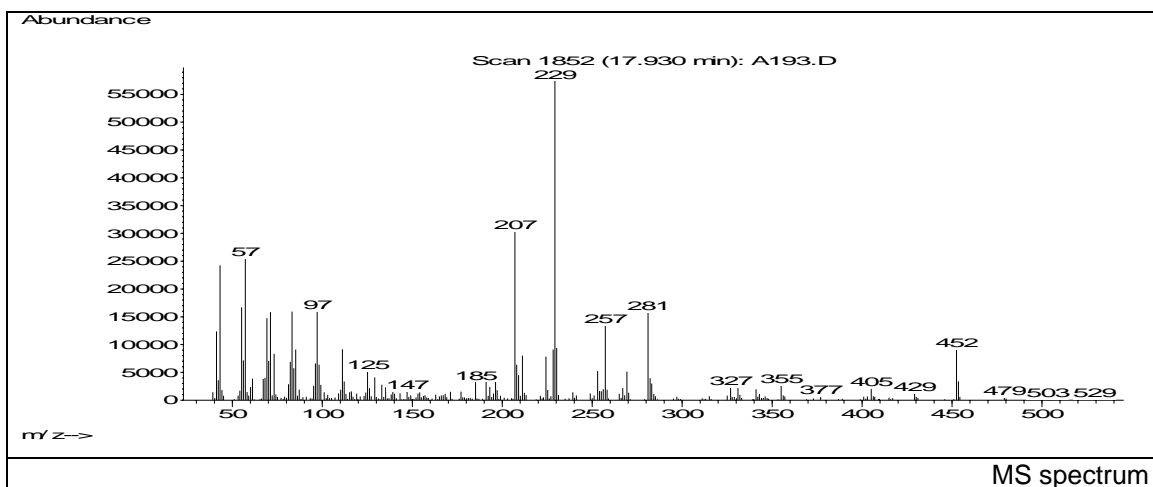


m/z	Abundance	Ion Intensity %	m/z	Abundance	Ion Intensity %
41.15	5967.0	21.73	97.15	6127.0	22.32
43.15	11403.0	41.53	111.15	4430.0	16.13
55.15	7506.0	27.34	196.25	5381.0	19.60
57.15	11150.0	40.61	207.05	20872.0	76.02
69.15	6376.0	23.22	208.05	4190.0	15.26
71.15	5703.0	20.77	229.25	27456.0	100.00
73.15	4633.0	16.87	230.25	4026.0	14.66
83.15	6303.0	22.96	281.05	10616.0	38.67

Spectrometer: HEWLETT PACKARD GC/MS 6890/5973
 Inlet system: capillary GC/MS
 Scan Range: 40-700 amu
 Source temperature: 230°C

Flow: 1.2 mL/min
 Column: HP-5MS (30 m x 0.25 mm x 0.25 µm)
 Programme temperature: 60°C; 15°C/min (300°C)
 10°C/min (325°C); 6.5 min

JRC CRL - FCM Database / GC-MS

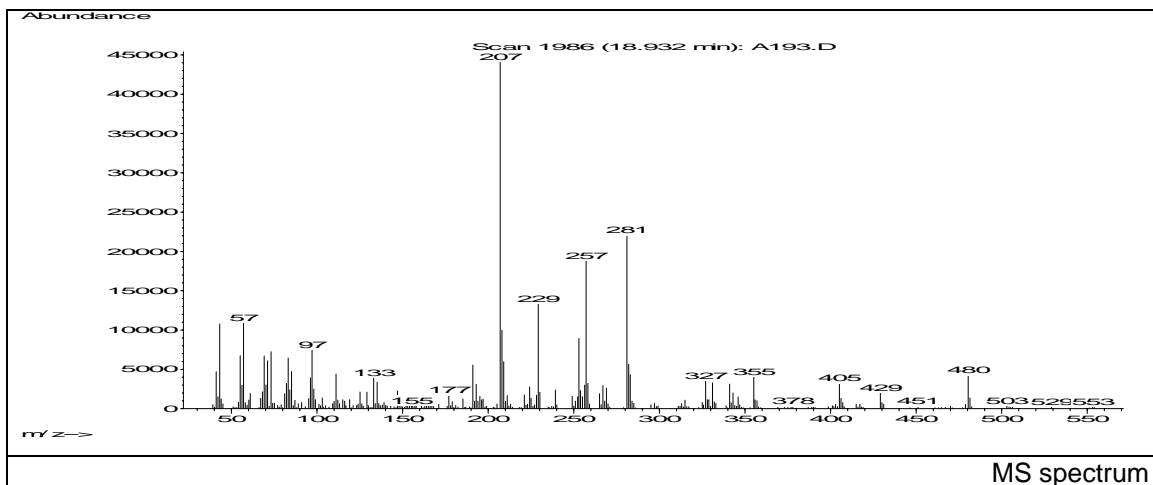


m/z	Abundance	Ion Intensity %	m/z	Abundance	Ion Intensity %
41.15	12364.0	20.66	97.15	15966.0	26.67
43.15	24240.0	40.50	111.15	9146.0	15.28
55.15	16720.0	27.93	207.05	30336.0	50.68
57.15	25480.0	42.57	228.25	9114.0	15.23
69.15	14768.0	24.67	229.25	59856.0	100.00
71.15	15841.0	26.47	230.25	9413.0	15.73
83.15	15931.0	26.62	257.25	13352.0	22.31
85.15	9104.0	15.21	281.05	15841.0	26.47

Spectrometer: HEWLETT PACKARD GC/MS 6890/5973
 Inlet system: capillary GC/MS
 Scan Range: 40-700 amu
 Source temperature: 230°C

Flow: 1.2 mL/min
 Column: HP-5MS (30 m x 0.25 mm x 0.25 µm)
 Programme temperature: 60°C; 15°C/min (300°C)
 10°C/min (325°C); 6.5 min

JRC CRL - FCM Database / GC-MS



m/z	Abundance	Ion Intensity %	m/z	Abundance	Ion Intensity %
43.15	10817.0	23.81	207.05	45440.0	100.00
55.15	6778.0	14.92	208.05	10016.0	22.04
57.15	10964.0	24.13	209.05	6013.0	13.23
69.15	6739.0	14.83	229.25	13343.0	29.36
71.15	6136.0	13.50	253.05	8982.0	19.77
73.15	7298.0	16.06	257.25	18832.0	41.44
83.15	6478.0	14.26	281.05	22048.0	48.52
97.15	7537.0	16.59	282.05	5696.0	12.54

Spectrometer: HEWLETT PACKARD GC/MS 6890/5973
 Inlet system: capillary GC/MS
 Scan Range: 40-700 amu
 Source temperature: 230°C

Flow: 1.2 mL/min
 Column: HP-5MS (30 m x 0.25 mm x 0.25 µm)
 Programme temperature: 60°C; 15°C/min (300°C)
 10°C/min (325°C); 6.5 min