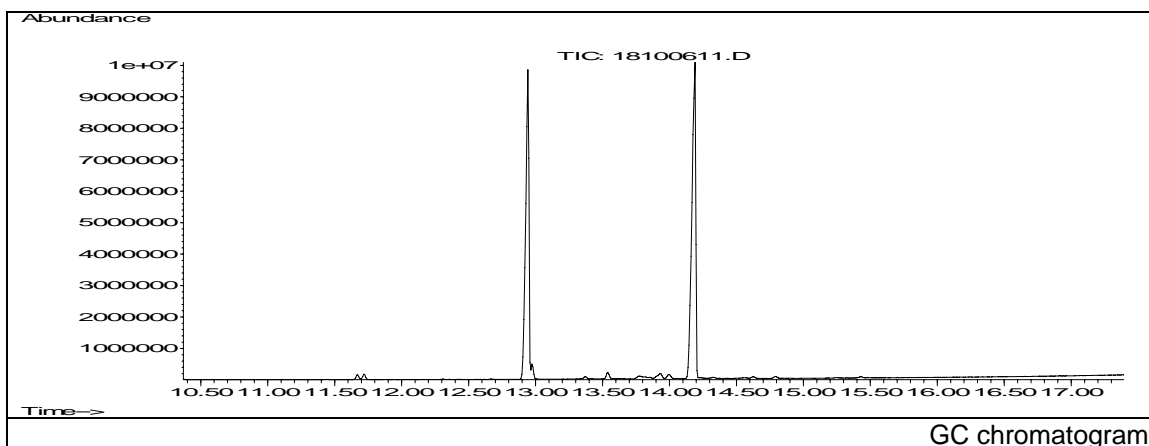


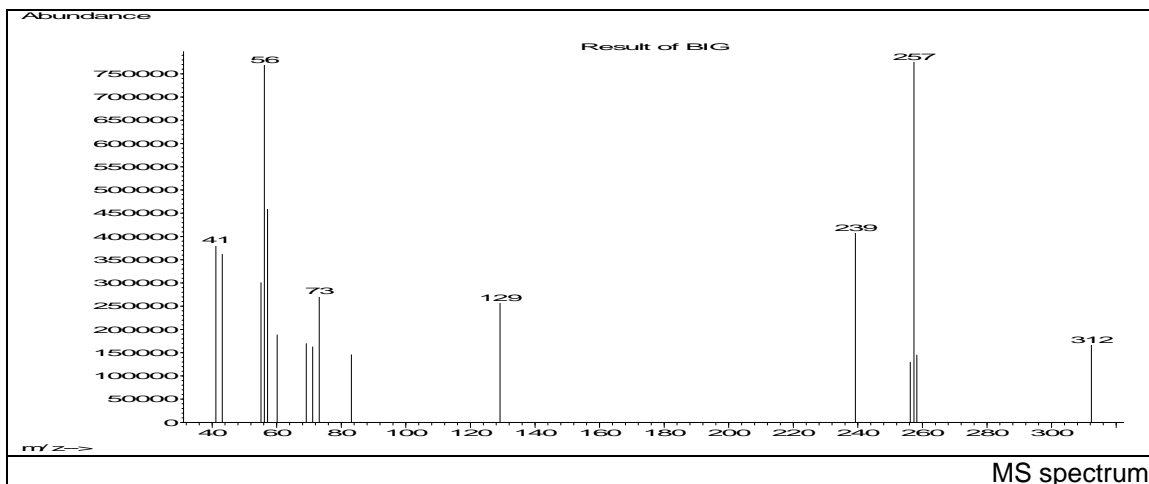
JRC CRL - FCM Database / GC-MS

Sample Name: n-butyl stearate
Solvent: Ethanol
Concentration: 100 µg/mL

Date: 25/10/2006
CAS: 00123-95-5 + 00111-06-8
PM ref: 89120 + 70480 [U.R.N. A184]



GC chromatogram



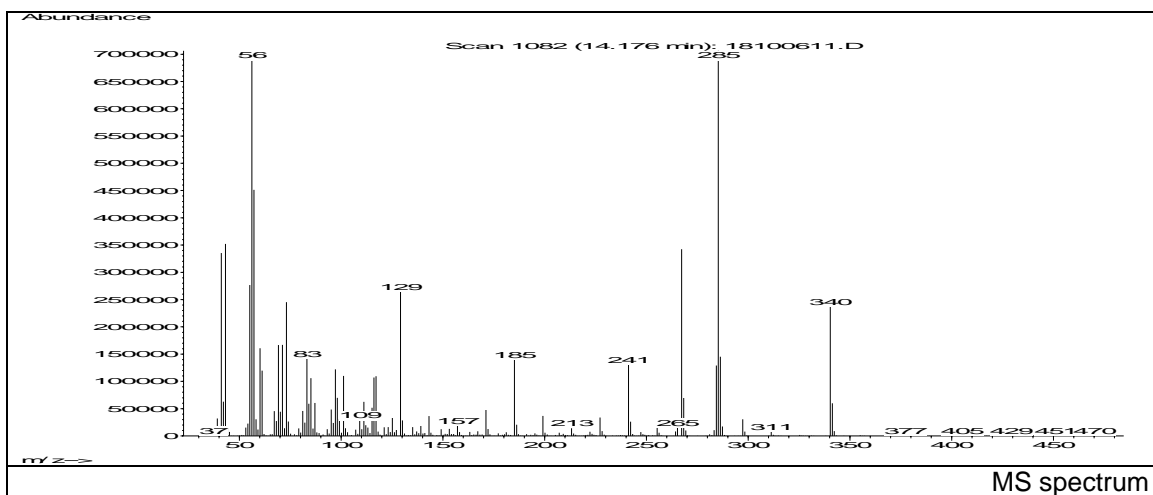
MS spectrum

m/z	Abundance	Ion Intensity %	m/z	Abundance	Ion Intensity %
41.15	381504.0	47.83	73.15	272000.0	34.10
43.15	361536.0	45.32	83.15	145664.0	18.26
55.15	300800.0	37.71	129.15	257920.0	32.33
56.15	769984.0	96.53	239.25	408704.0	51.24
57.15	458432.0	57.47	256.25	129272.0	16.21
60.15	188032.0	23.57	257.35	797696.0	100.00
69.15	169664.0	21.27	258.25	144960.0	18.17
71.15	162432.0	20.36	312.35	167744.0	21.03

Spectrometer: HEWLETT PACKARD GC/MS 6890/5973
Inlet system: capillary GC/MS
Scan Range: 40-700 amu
Source temperature: 230°C

Flow: 1.2 mL/min
Column: HP-5MS (30 m x 0.25 mm x 0.25 µm)
Programme temperature: 60°C; 15°C/min (250°C)
10°C/min (325°C); 10 min

JRC CRL - FCM Database / GC-MS



m/z	Abundance	Ion Intensity %	m/z	Abundance	Ion Intensity %
41.15	335424.0	47.49	73.15	245376.0	34.74
43.15	352064.0	49.84	83.15	141888.0	20.09
55.15	276736.0	39.18	129.15	264576.0	37.46
56.15	697024.0	98.68	185.15	140352.0	19.87
57.15	451328.0	63.89	267.35	342528.0	48.49
60.15	160832.0	22.77	285.35	706368.0	100.00
69.15	166784.0	23.61	286.35	145088.0	20.54
71.15	166848.0	23.62	340.35	237376.0	33.61

Spectrometer: HEWLETT PACKARD GC/MS 6890/5973
 Inlet system: capillary GC/MS
 Scan Range: 40-700 amu
 Source temperature: 230°C

Flow: 1.2 mL/min
 Column: HP-5MS (30 m x 0.25 mm x 0.25 µm)
 Programme temperature: 60°C; 15°C/min (250°C)
 10°C/min (325°C); 10 min