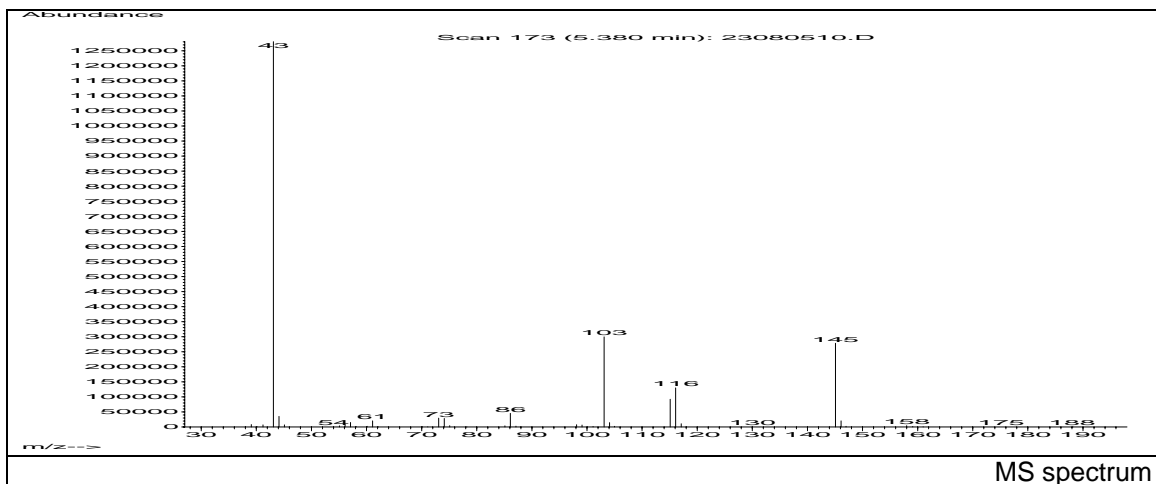
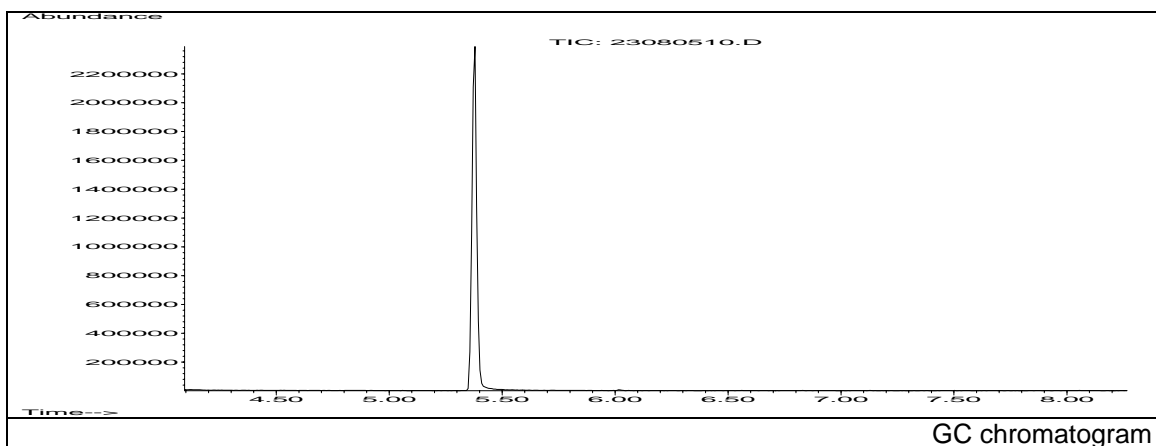


# JRC CRL - FCM Database / GC-MS

Sample Name: Glycerol triacetate  
Solvent: Hexane  
Concentration: 100 µg/mL

Date: 08/08/2005  
CAS: 000102-76-1  
PM ref: 57760 [U.R.N. A040]



m/z	Abundance	Ion Intensity %	m/z	Abundance	Ion Intensity %
39.10	7887,0	0,62	103.10	299136,0	23,36
43.10	1280512,0	100,00	104.10	14430,0	1,13
44.10	35024,0	2,74	115.10	92312,0	7,21
57.10	15229,0	1,19	116.10	130168,0	10,17
61.10	20504,0	1,60	117.10	10803,0	0,84
73.10	29536,0	2,31	145.10	278016,0	21,71
74.10	28488,0	2,22	146.10	20168,0	1,57
86.10	45408,0	3,55			

Spectrometer: HEWLETT PACKARD GC/MS 6890/5973  
Inlet system: capillary GC/MS  
Scan Range: 40 - 700 amu  
Source temperature: 230 °C

Flow: 1.2 mL/min  
Column: DB 17-HT (30 m x 0.25 mm x 0.15 µm)  
Programme temperature: 70 °C; 20 °C/min (250 °C);  
10 °C/min (350 °C); 350 °C (20 min)