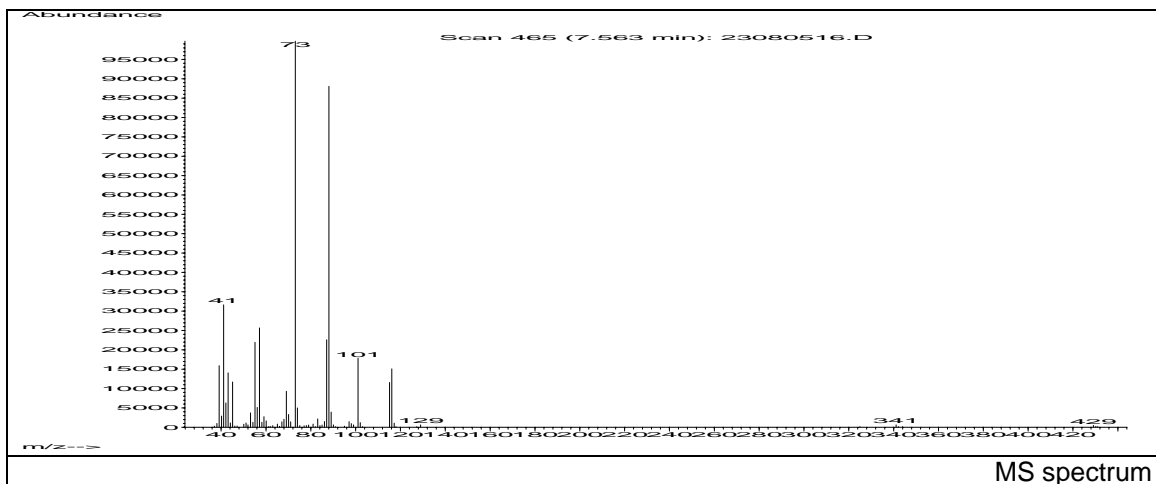
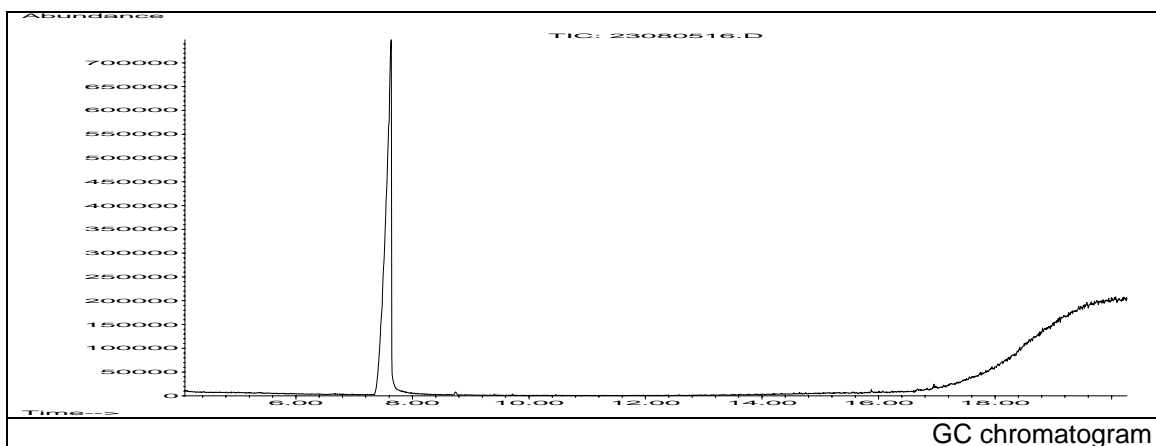


JRC CRL - FCM Database / GC-MS

Sample Name: 2-Ethylhexanoic acid
Solvent: Alcohol, ether
Concentration: 100 µg/mL

Date: 08/08/2005
CAS: 000149-57-5
PM ref: 53920 [U.R.N. A031]



m/z	Abundance	Ion Intensity %	m/z	Abundance	Ion Intensity %
39.10	19976,0	16,17	73.10	123512,0	100,00
41.10	40184,0	32,53	74.10	6353,0	5,14
42.10	7420,0	6,01	87.10	31232,0	25,29
43.10	17720,0	14,35	88.10	109344,0	88,53
45.10	14517,0	11,75	101.10	23024,0	18,64
55.10	28232,0	22,86	115.10	14401,0	11,66
57.10	30672,0	24,83	116.10	19240,0	15,58
69.10	11639,0	9,42			

Spectrometer: HEWLETT PACKARD GC/MS 6890/5973
Inlet system: capillary GC/MS
Scan Range: 40 - 700 amu
Source temperature: 230 °C

Flow: 1.2 mL/min
Column: DB 17-HT (30 m x 0.25 mm x 0.15 µm)
Programme temperature: 70 °C; 20 °C/min (250 °C);
10 °C/min (350 °C); 350 °C (20 min)